

Welcome to

ARCADA UNIVERSITY OF APPLIED SCIENCES



Start of studies

Hanna Grönholm

Study Counsellor

International Business

Information Technology

Sofie Sundström

Study Counsellor

Mechanical and Sustainable Engineering

Laurits Møller

International Student Advisor

Structure of the session

- Presentation – who are we?
- Today's schedule
- Schedule for next week
- Student Affairs
- Questions



arcada.fi

Study Counsellors

We provide advice and guidance in planning personal study plans.



arcada.fi

Contact information

- **Hanna Grönholm**
- Study Counsellor
- International Business
- Information Technology
- +358 (0)294 282 708
- hanna.gronholm@arcada.fi



Contact information

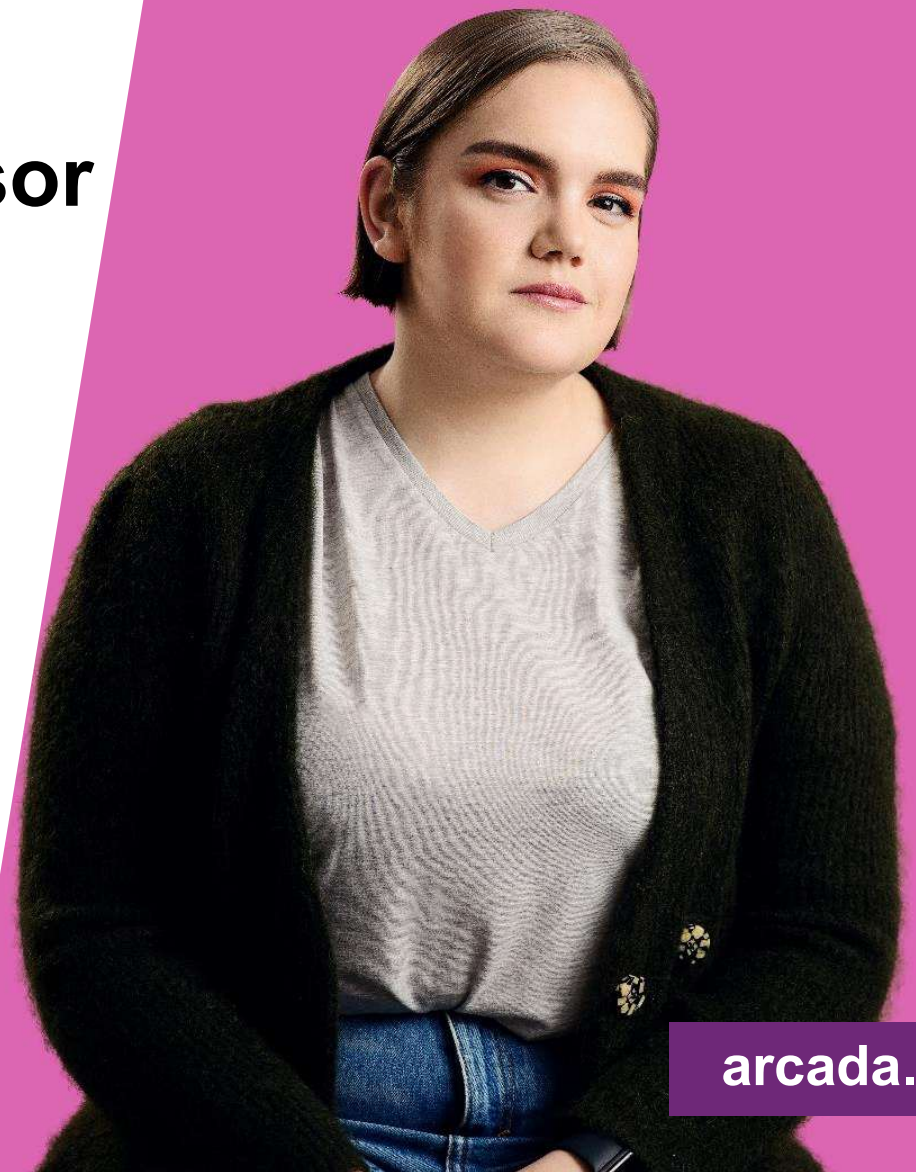
Sofie Sundström

- Study Counsellor
- Mechanical and Sustainable Engineering
- +358 (0)294 282 651
- sofie.j.sundstrom@arcada.fi



International Student Advisor

I provide advice and guidance
for newcomers in Finland.



arcada.fi

Contact information

Laurits Møller

International Student Advisor

+358 (0)294 282 560

laurits.moller@arcada.fi

Room C244 in the Library

<https://start.arcada.fi/en/study-support/for-international-students>





Today's Schedule

Time	Programme	Room
9.00-9.15	Welcome to Finland!	Small Auditorium (F249)
9.15-9.45	Practical information about the start of studies	Small Auditorium (F249)
10.00-11.30	Life and studies in Finland & cultural adaptation	Small Auditorium (F249)
11.30-12.00	Tuition fees & scholarships Information about submission of original certificates	Small Auditorium (F249)
12.00-13.00	Lunch	
13-14	IT drop-in, stamping of meal subsidy cards and HSL certificates, key app	Pacius (IT drop-in), Big Square (stamping & mingle), Info desk (key app)

Schedule for August 25th to 29th

FOUND ON START!

- International Business
- Information Technology + Mechanical and Sustainable Engineering
- This is Arcada & Arcada Student Union ASK
- Welcome to the Degree Programme
- Session with the Study Counsellor & Course enrollment
- Digital Tools
- Student Affairs
- Tutors & Student Association



arcada.fi

IB - Schedule for 25-26.8

Monday 25.08.2025:

09.00 – 09.45	Welcome to International Business - Information about the Degree Programme - B518
10.00 – 11.15	Session with the Study Counsellor - E383
11.15 – 12.00	This is Arcada & Arcada Student Union ASK - Small Auditorium F249
12.00 – 13.15	LUNCH
13.15 – 13.45	Campus tour with the tutors - B518
13.45 – 14.15	Student Association HanSe & visit to the Cor-house - B518

Tuesday 26.08.2025:

10.00 – 10.45	Digital Tools - E383
11.00 – 11.30	Student Affairs - Small auditorium F249
11.30 – 12.15	LUNCH
12.15 – 15.00	Amazing Business Race - Big Auditorium F143

IB - Schedule for 27-28.8

Wednesday 27.08.2025:

10.15 – 11.15 Introduction to language studies - Big Auditorium 143

11.15 – 12.15 LUNCH

12.15 – 13.45 **Introduction to Business Administration** - A409

14.00 – 15.00 Information about practical training - A409

Thursday 28.08.2025:

09.00 – 10.00 Support in Studies & Library Services - Small Auditorium F249

10.15 – 11.45 **Business Mathematics and Statistics** - B518

11.45 – 12.15 LUNCH

12.15 – 13.45 **Technology and Learning** - Big Auditorium F143

IT - Schedule for 25-26.8

Monday 25.8.2025:

- 10.30 – 11.00 Student Association TLK presentation - F365
- 11.15 – 12.00 This is Arcada + Arcada Student Union ASK – Small Auditorium (F249)
- 12.00 – 13.00 LUNCH
- 13.00 – 14.30 Presentation of the Degree Programme D4106

Tuesday 26.8.2025

- 9.45 – 10.30 Campus Tour with Tutors – Meeting point first floor
- 11.00 – 11.30 Student Affairs – Small Auditorium (F249)
- 11.30 – 12.30 LUNCH
- 12.30 – 13.30 Digital Tools – F365
- 13.45 – 15.00 Session with the Study Counsellor – F365
- 15.00 – 16.00 Programme with tutors

IT - Schedule for 27-29.8

Wednesday, 27.8.2025:

10.15-11.15 Information about language studies – Big Auditorium (F143)

11.15-12.15 Lunch

12.15-15.00 Technology and Learning - B323

Thursday, 28.8.2025:

9.00-10.00 Support in studies & Library services – Small Auditorium (F249)

10.15-11.15 Drop-in session with the Study Counsellor F363

11.15-12.30 Lunch

12.30-15.15 Web Development - E385

MSE - Schedule for 25-26.8

Monday 25.8.2025:

10.00 – 11.00	Presentation of the Degree Programmes MSE & MTH - D4106
11.15 – 12.00	This is Arcada + Arcada Student Union ASK – Small Auditorium (F249)
12.00 – 13.00	LUNCH
13.00 – 13.30	Student Association TLK presentation – B522
13.45 – 15.15	Session with the Study Counsellor

Tuesday 26.8.2025

9.45 – 10.30	Drop-in Session for Students Who Need Help with Course Enrollment (Optional) - E387
11.00 – 11.30	Student Affairs – Small Auditorium (F249)
11.30 – 12.30	LUNCH
12.30 – 13.30	Campus Tour - "Lion Square" (outside)
13.30 – 14.30	Programme with tutors

MSE - Schedule for 27-29.8

Wednesday, 27.8.2025:

10.15-11.15 Information About Language Studies – Big Auditorium (F143)

11.15-12.15 Lunch

Thursday, 28.8.2025:

9.00-10.00 Support in studies & Library services – Small Auditorium (F249)

11.00-12.00 Lunch

Friday, 29.8.2025:

11.30-12.30 Lunch

12.30-15.30 Engineering Chemistry – Big auditorium (F143)

Student Affairs

- Tuition fees
- Scholarships
- Registration for the academic year

studentaffairs@arcada.fi

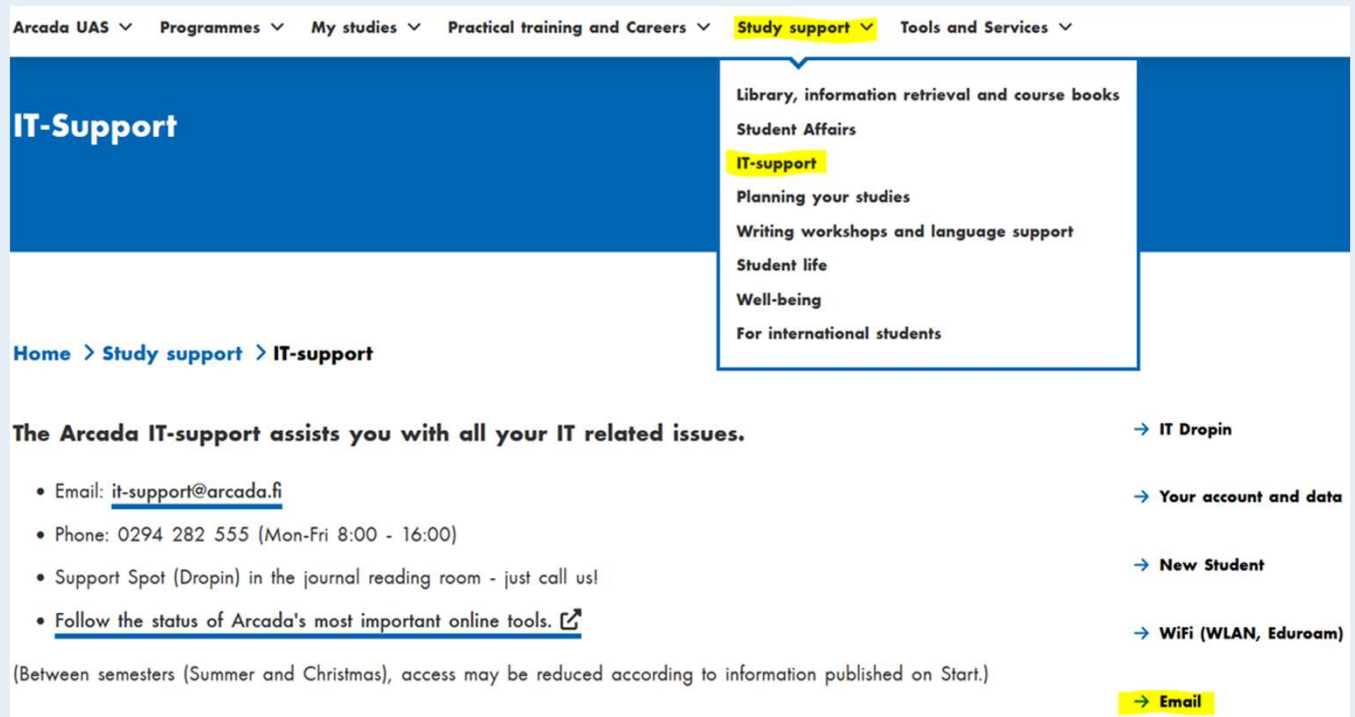
Drop-in hours will be publish on Start



arcada.fi

Arcada Email Account

- Start using your Arcada email account now!
- <http://outlook.arcada.fi>
- How to configure your Arcada email on your laptop or phone?
- Check instructions on start.arcada.fi > Study support- It-support-Email
- <https://start.arcada.fi/en/study-support/it-support/email>



The screenshot shows the Arcada website's navigation menu with 'Study support' highlighted. A dropdown menu is open, showing options like 'Library, information retrieval and course books', 'Student Affairs', 'IT-support' (highlighted), 'Planning your studies', 'Writing workshops and language support', 'Student life', 'Well-being', and 'For international students'. Below the navigation, the page title is 'IT-Support'. The breadcrumb trail reads 'Home > Study support > IT-support'. The main content area states: 'The Arcada IT-support assists you with all your IT related issues.' and lists contact information: Email: it-support@arcada.fi, Phone: 0294 282 555 (Mon-Fri 8:00 - 16:00), Support Spot (Dropin) in the journal reading room - just call us!, and a link to follow the status of Arcada's most important online tools. On the right side, there are links: '→ IT Dropin', '→ Your account and data', '→ New Student', '→ WiFi (WLAN, Eduroam)', and a yellow button '→ Email' at the bottom.

Arcada UAS ▾ Programmes ▾ My studies ▾ Practical training and Careers ▾ Study support ▾ Tools and Services ▾

IT-Support

Library, information retrieval and course books
Student Affairs
IT-support
Planning your studies
Writing workshops and language support
Student life
Well-being
For international students

Home > Study support > IT-support

The Arcada IT-support assists you with all your IT related issues.

- Email: it-support@arcada.fi
- Phone: 0294 282 555 (Mon-Fri 8:00 - 16:00)
- Support Spot (Dropin) in the journal reading room - just call us!
- [Follow the status of Arcada's most important online tools.](#)

(Between semesters (Summer and Christmas), access may be reduced according to information published on Start.)

→ IT Dropin
→ Your account and data
→ New Student
→ WiFi (WLAN, Eduroam)
→ Email

Questions?



arcada.fi

Thank you!

Enjoy your studies at Arcada!



arcada.fi