

ARCADA UNIVERSITY OF APPLIED SCIENCES



Studying at Arcada

Mecahnical and Sustainable Engineering

Sofie Sundström
Study Counsellor

Information about the degree

- **Name of degree:** Bachelor of Engineering / Ingenjör (YH)
- **Scope:** 240cr (1 cr \approx 27 hours). One study unit normally 5cr. (Study unit = course)
- **Duration:** 4 years
- **Expected study pace:**
 - **one period:** Full-time 15 cr
 - **one semester:** 30 cr
 - **one academic year:** 60 cr

Academic Year 2024-2025

The academic year starts officially on August 1st 2024 and ends on July 31st 2025.

Period 1: 1.8–27.10.2024

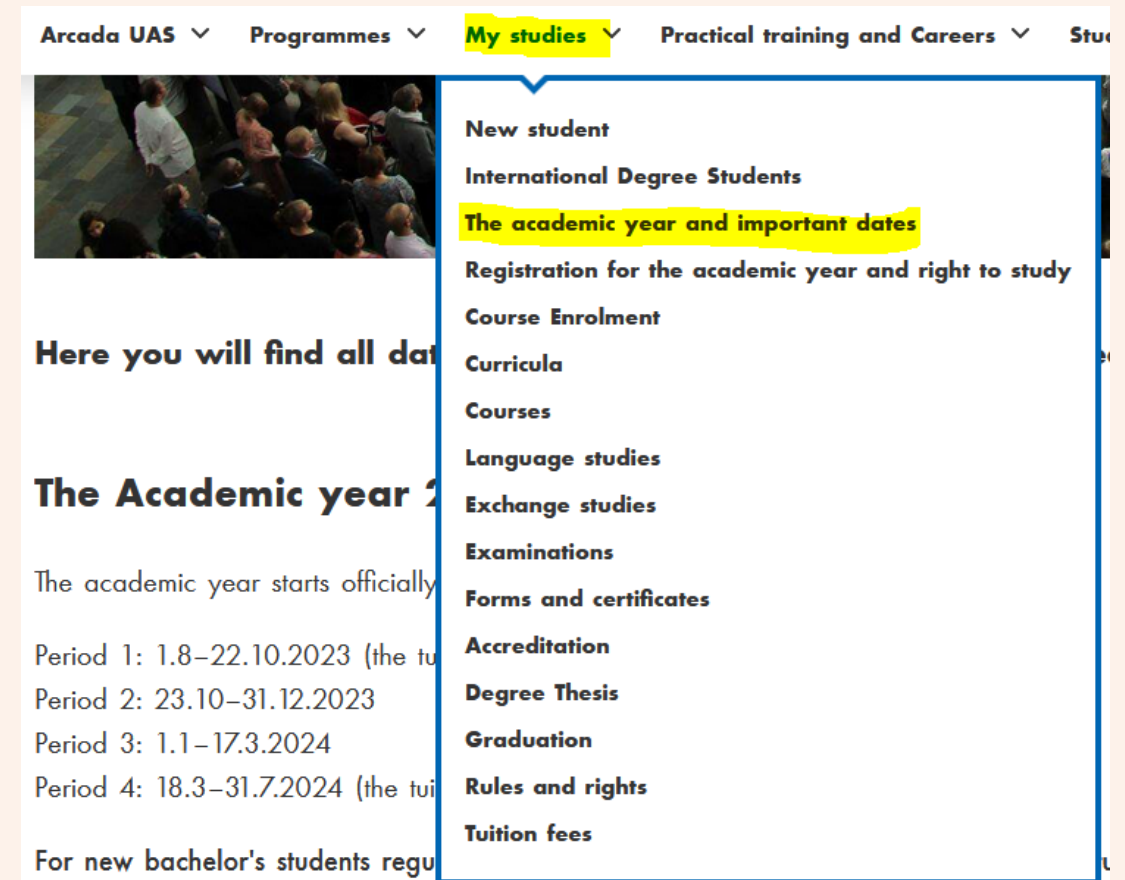
Period 2: 28.10–31.12.2024

Period 3: 1.1–16.3.2025

Period 4: 17.3–31.7.2025

During the time 21.12.2024–6.1.2025 there are no tuition arranged at Arcada.

Check national public holidays celebrated in Finland on start.arcada.fi



The screenshot shows the Arcada UAS website navigation menu. The 'My studies' menu is open, displaying a list of options. The option 'The academic year and important dates' is highlighted in yellow. The menu items are: New student, International Degree Students, The academic year and important dates, Registration for the academic year and right to study, Course Enrolment, Curricula, Courses, Language studies, Exchange studies, Examinations, Forms and certificates, Accreditation, Degree Thesis, Graduation, Rules and rights, and Tuition fees. The background of the page shows a crowd of people and the text 'Here you will find all data' and 'The Academic year 2'.

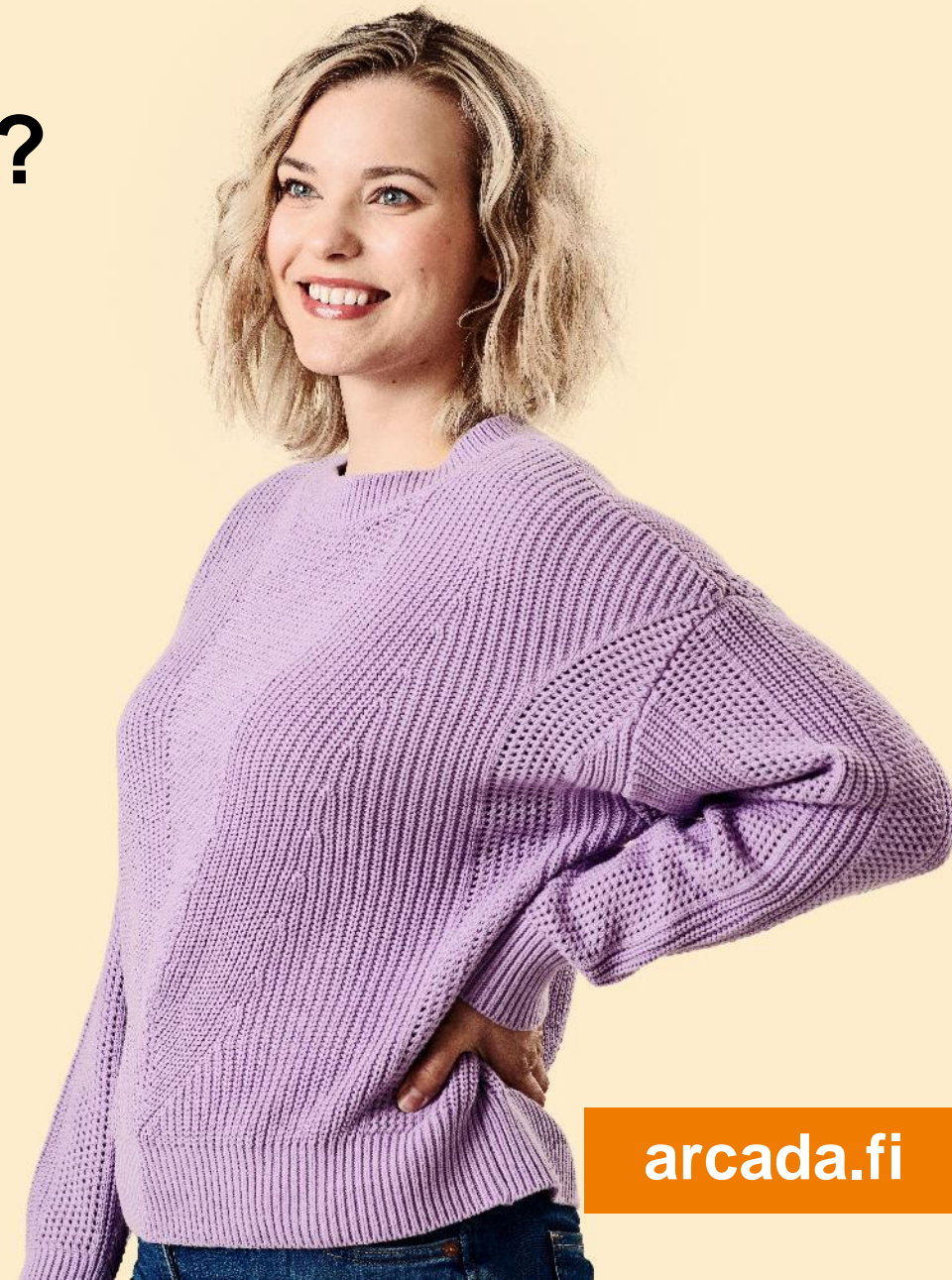
Study Plan = Curriculum

It is very important to familiarise yourself with the curriculum in order to get an overview of the degree that you are about to complete.



Where do I find my study plan?

- In the study guide **START** – start.arcada.fi
 - [Study plan](#)
 - [Structure of the studies](#)
- In the student information system **SISU** – sisu.arcada.fi
 - The study plan has to be created
 - “Structure of studies”



Structure of studies

- **General education studies:** **15 cr**
- **Professional studies:** **165 cr**
 - Foundation studies: 30 cr
 - Advanced studies: 135 cr
 - Practical training: 30 cr
 - Professional communication: 15 cr
- **Development studies:** **30 cr**
- **Research studies:** **30 cr**
 - Research Methods: 15 cr
 - Thesis: 15 cr

Studying at an UAS

- At a University of Applied Sciences, the **focus lies on providing education and conducting research that ties into professional working life.**
- Teaching within higher education is **based on science but involves a practical orientation.** A wide range of teaching and learning methods are utilised and the amount of contact teaching/hours is less than within the general upper secondary or vocational upper secondary education. Student-centered learning is also an essential part of studies.
- The **schedule varies depending on the courses you are completing.** The year of study and the development studies chosen also play an essential part in how your schedule looks like.
 - A day without lectures does not mean a day off. These days the focus should lie on individual work/self-studies (reading, completing assignments, writing reports etc.).
- **Practical training is a compulsory part of the studies.** The placements are to be found by the students themselves.

Independent studies

- Independent learning is instrumental to student success within higher education.
- Students are expected to take responsibility for their learning and for their studies in general.
- Arcada offers help along the way. There are several support services available → [Study support](#).

Fee-paying students

It is important to be aware of the scholarship requirements in the beginning of your studies.

Summary - studying at an UAS

- A wide range of teaching and learning methods are utilised.
- The amount of contact teaching is less than within upper secondary education.
- Students are expected to take responsibility for their learning.
- 30 cr of compulsory practical training is included.
 - Students are responsible for finding the placement themselves.

Descriptions of courses



Teacher



Competences, learning outcomes, content of the course



Recommended or required reading



Study activities



Assessment methods and requirements



Course specific questions? - Contact the teacher

Assessment and examinations

- Assessment requirements and forms of examination are stated in the description of the course.
- Example of examination methods
 - exams
 - essays
 - assignments
 - reports
 - demonstrations or presentations
 - group work
- An approved study attainment is assessed with the grades:
 - excellent (5), very good (4), good (3), satisfactory (2), sufficient (1)
 - in specific cases, with the grade “passed”.

Mandatory presence?

Check the course description or ask the teacher.

If you are not able to be present during a lecture, please inform the teacher about the matter in advance (only valid reasons are accepted). The absence may be compensated with an e.g. obligatory pre-assignment. Moreover, you are not entitled to extra support due to your absence. If you do not participate in the following lectures or submit the prospective pre-assignment the teacher has the right to cancel your enrollment.

Check START for more detailed instructions

- Examinations (general)
- Degree Statutes (all of Arcada)
- Equality and equal treatment & Arcada's quality culture



start.arcada.fi

IT-account



Your Arcada user account and password should not be used to sign up to other web pages or IT-services that are not related to your studies at Arcada



Don't hand out your username or password to anyone, not even IT-personnel or administrators.



IT-support does not require or ever will ask for your Password to fix anything in your Account.



Start → Study support → IT support

Insurance for accidents

- The insurance covers all students during **practical lessons, practical training and when travelling to and from the practical training place.**
- No excess (självrisk, omavastuu) is required
- An **accident report** has to be done **within 10 days** from the accident:
<https://start.arcada.fi/en/my-studies/accidents>
- **More information:** <https://start.arcada.fi/en/arcada-uas/campus/safety-and-crisis-management>

Application for accreditation or validation

- Students may apply for accreditation or validation of:
 - Studies carried out at another Higher Education Institution
 - Relevant work experience
 - Knowledge gained informally through work experience
- Only competences that are relevant to the degree can be accredited.
- Info session for those who want to accredit previous studies on Friday 30.8. at 11.15-12.00 in Large Auditorium (F143).

When to contact your Study Counsellor

- If you have study related questions that include planning of studies at Arcada
 - If you want to study in a faster pace and need an individual study plan
 - If you have fallen behind in your studies and need an individual study plan
 - Questions related to accreditation of previously gained degrees at a university level

Contact information

Sofie Sundström, PM.

Study Counsellor

+358 (0)50 409 2872

sofie.j.sundstrom@arcada.fi



Support in studies

Planning of studies

Study Counsellor

Counselling and support

Psychologist and Study Social Worker

Support for international students

International Student Advisor

Student Affairs & Sisu support

Study Coordinators

Career planning – Career Centre Arabia

Career Counsellors





Student Affairs

- Tuition fees
- Scholarship
- Registration for the academic year
- Filling in different forms

studentaffairs@arcada.fi

What should I do now?

- Read your Arcada email daily
- Read through the study plan for your degree on Start
- Send me an email, if you have questions
- Attend the info session in September (you will get email about the date and time later in the autumn)
- Check the website of our IT-support and their tutorials (in start)



Questions?



arcada.fi

**TACK!
THANK YOU!
KIITOS!**



arcada.fi

arcada.fi

